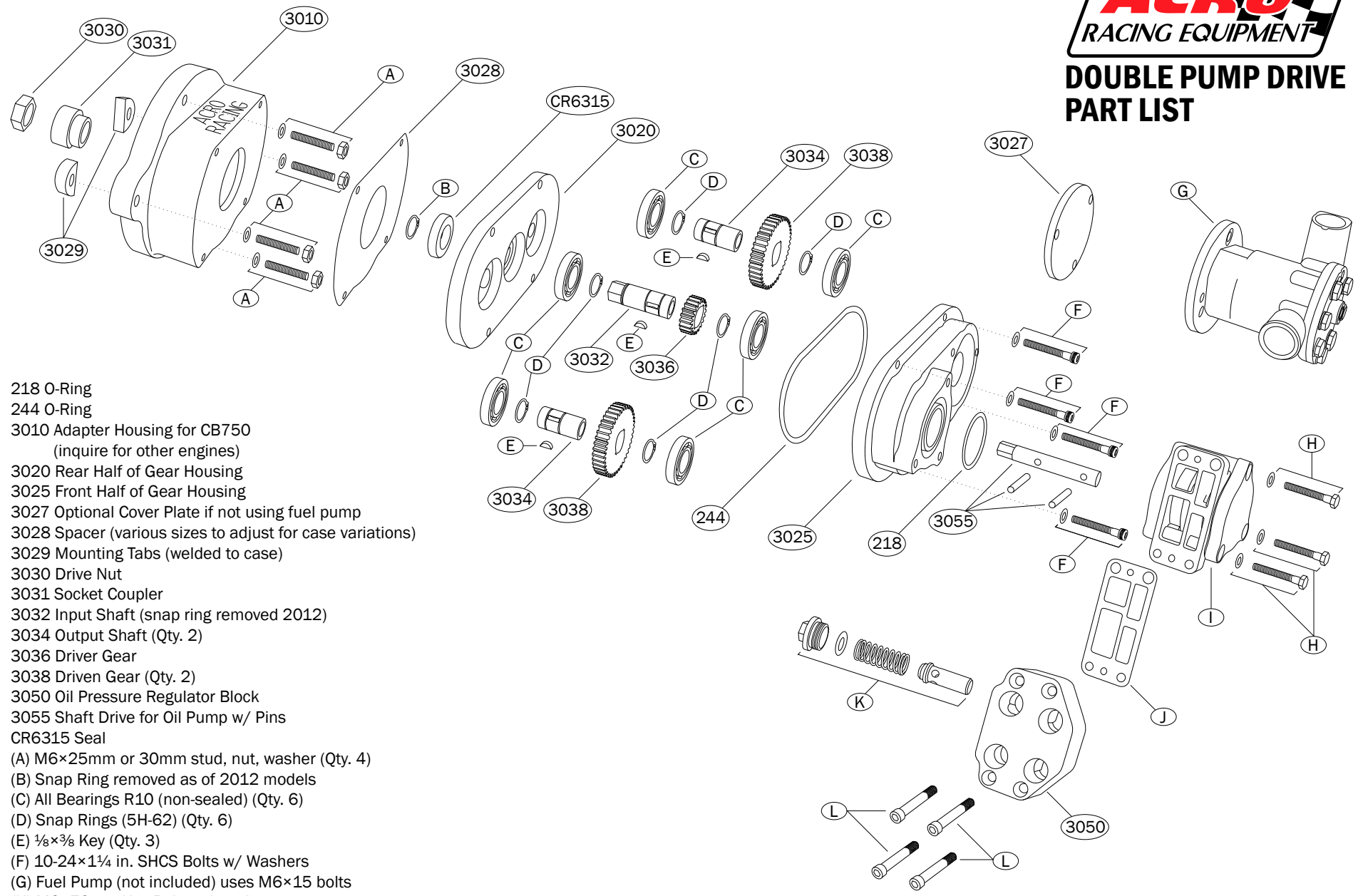




DOUBLE PUMP DRIVE PART LIST



- 218 O-Ring
- 244 O-Ring
- 3010 Adapter Housing for CB750
(inquire for other engines)
- 3020 Rear Half of Gear Housing
- 3025 Front Half of Gear Housing
- 3027 Optional Cover Plate if not using fuel pump
- 3028 Spacer (various sizes to adjust for case variations)
- 3029 Mounting Tabs (welded to case)
- 3030 Drive Nut
- 3031 Socket Coupler
- 3032 Input Shaft (snap ring removed 2012)
- 3034 Output Shaft (Qty. 2)
- 3036 Driver Gear
- 3038 Driven Gear (Qty. 2)
- 3050 Oil Pressure Regulator Block
- 3055 Shaft Drive for Oil Pump w/ Pins
- CR6315 Seal
- (A) M6×25mm or 30mm stud, nut, washer (Qty. 4)
- (B) Snap Ring removed as of 2012 models
- (C) All Bearings R10 (non-sealed) (Qty. 6)
- (D) Snap Rings (5H-62) (Qty. 6)
- (E) 1/8×3/8 Key (Qty. 3)
- (F) 10-24×1 1/4 in. SHCS Bolts w/ Washers
- (G) Fuel Pump (not included) uses M6×15 bolts
- (H) M6×70mm Hex Bolts w/ washers
- (I) Stock Honda CB750 Oil Pump available separately
- (J) Gasket for Stock Honda CB750 Oil Pump
- (K) Stock Honda Regulator Kit w/ Cap, Spring, & Plunger; shims available to adjust pressure
- (L) M6×40mm Bolts SHCS (Qty. 4)